

INOVANCE

IS810N 다축 서보 드라이브

Born for Accuracy

- 시공간 및 에너지 절약
- 뛰어난 안전성 및 신뢰성



EtherCAT®

STO
SIL3



IS810N 특징 및 기능

Designed for high performance, multi-axes applications

IS810N은 복잡하고 까다로운 산업 애플리케이션을 위해 설계된 모듈식 확장 가능 서보 플랫폼입니다.



**4.5 kHz 전류 루프
대역폭**

**EN/IEC 61800-5-2
에 따른 STO SIL3**

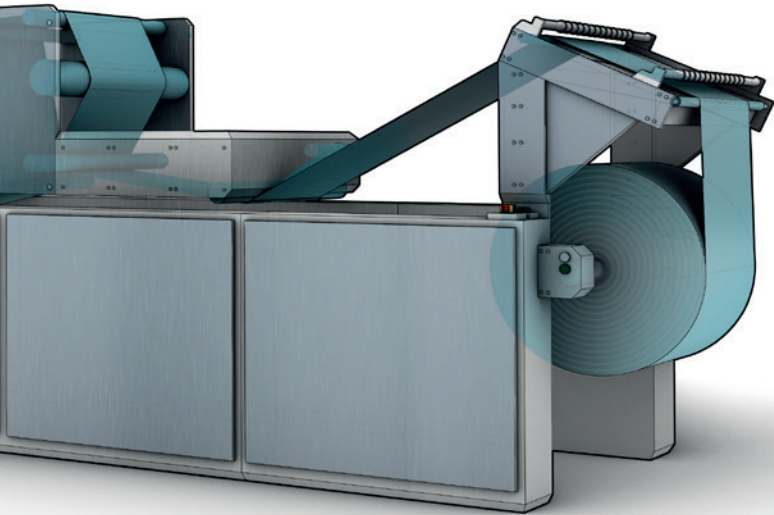


완전한 EtherCAT 기능

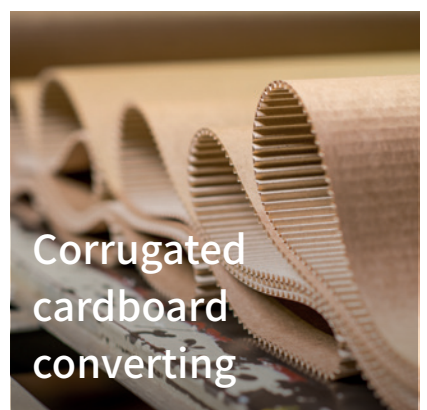
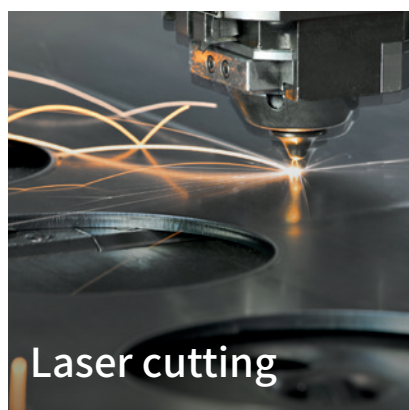
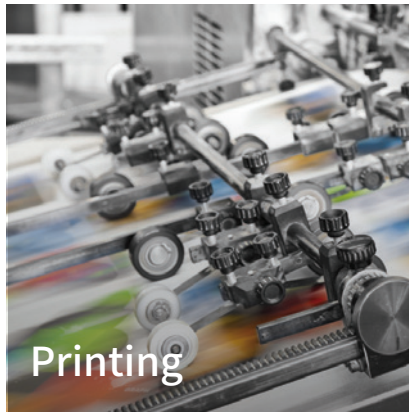
**전용 이더넷 포트를 통한
원격 서비스 및 유지 관리**

High dynamic performance with ultra-fast current loop

IS810N은 유럽 및 아시아 OEM 제조업체의 고성능 정밀 기계 요구 사항을 충족하며, 유럽과 아시아의 최첨단 R&D 기술을 결합한 공동 설계 과정을 통해 개발되었습니다.



- ✓ 고급 기능
- ✓ 단일 및 이중 축 모듈 사용 가능
- ✓ 공통 DC 버스를 통한 에너지 절약
- ✓ 견고한 디자인: 컨포멀 코팅
- ✓ 쉽고 유연한 통합
- ✓ 설치 비용 절감
- ✓ 간편한 시운전 및 유지보수



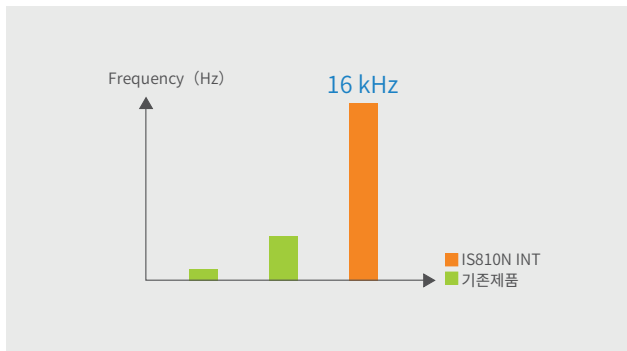
IS810N - 고급 다축 서보 플랫폼

Dynamic performance with ultra-fast current loop

IS810N의 4.5kHz 전류 루프 대역폭으로 모터가 오류를 최소화하면서 모션 프로파일을 따를 수 있게 합니다.

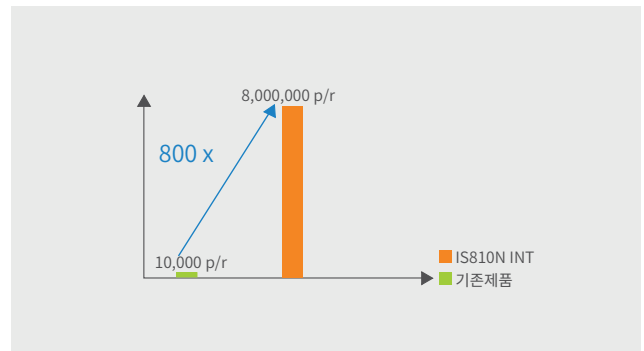
IS810N은 속도 루프와 전류 루프 사이의 모든 지연을 제거하여 완벽한 동기화와 더 높은 안정성을 자랑 합니다.

정착 시간이 단축되고 처리량이 높아져 시스템 성능이 근본적으로 향상되었습니다. 기계적 공진의 경우, 노치 필터 사용을 통해 고성능을 확보할 수 있습니다. (필요 시 최대 4개의 노치 필터 동시 사용 가능)



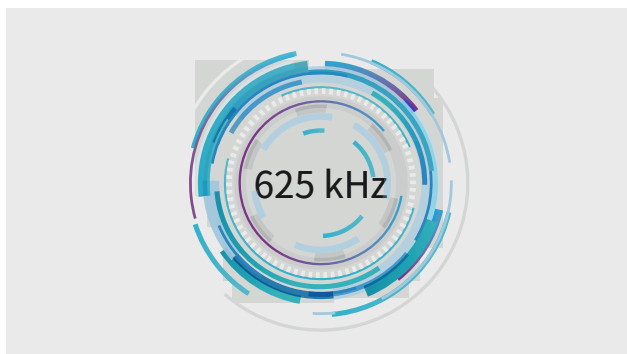
속도 및 위치 루프 사이클 시간 : 62.5 μ s

기존 세대 제품들 보다 4배 더 빠른 속도

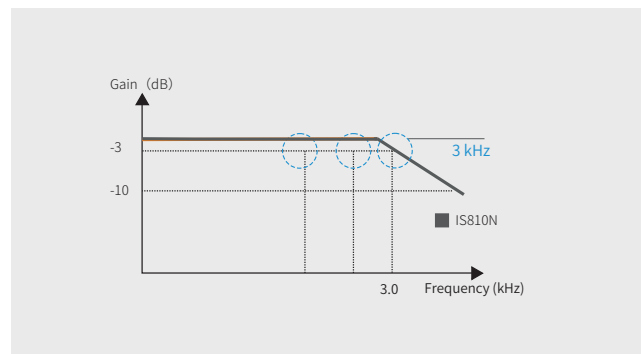


23비트 절대 엔코더와 일치

0.15 arc seconds 분해능

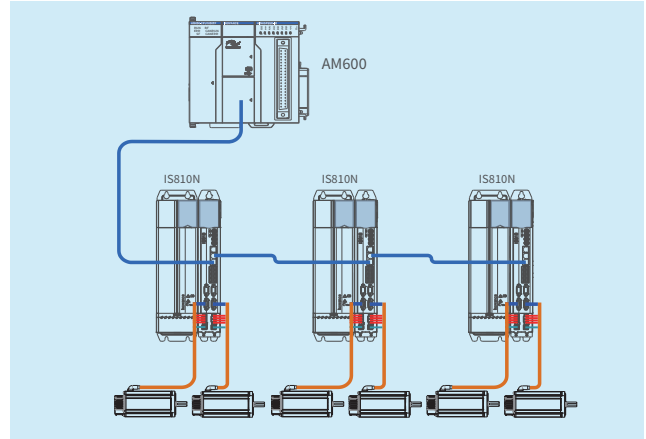
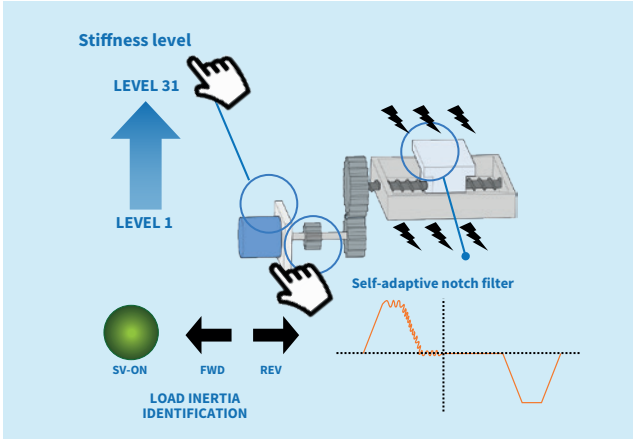


전류 루프 사이클 시간 : 1.6 μ s



3 kHz 속도 루프 대역폭

IS810N -



EtherCAT

EtherCAT CiA Drive Profile 402에는 7개의 모션 프로파일이 모두 포함되어 있습니다. 또한 SYNC 개체는 EtherCAT 분산 클럭의 정확한 작동을 가능하게 하여 드라이브 간의 완벽한 동기화를 가능하게 합니다.

한편, Modbus TCP/IP 프로토콜을 갖춘 전용 이더넷 포트를 사용하면 InoDriverShop PC 도구를 통해 효율적인 서비스 및 시운전이 가능합니다.

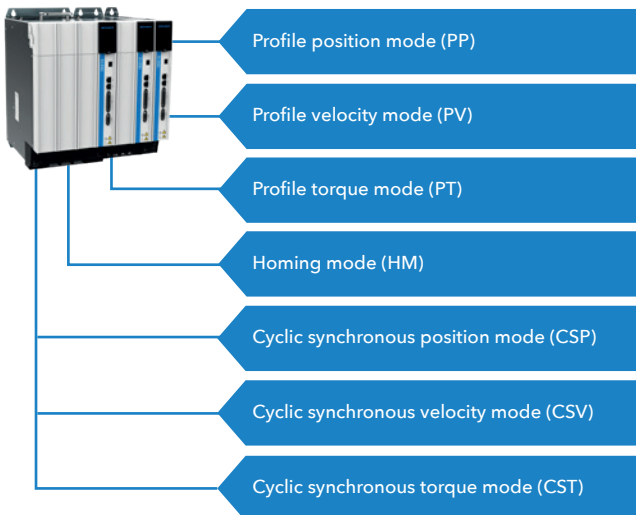
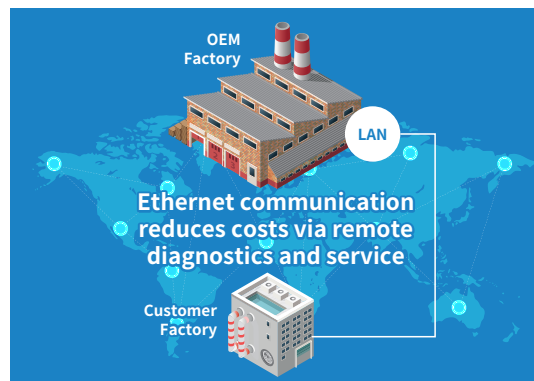
참고: CANopen 슬레이브 프로토콜은 IS810P variant 에서 지원됩니다.

IS810N의 자동 게인 기능을 사용하면 기계 성능을 최적화할 수 있습니다. 이를 통해 빠른 응답 속도와 안정성을 위해 강성을 조절할 수 있습니다.

- 온라인 및 오프라인 부하 관성 식별
- 강성 수준을 설정하여 속도 및 위치 루프 게인을 자동으로 조정합니다.
- 진동 주파수 자동 감지로 노치 필터 자동 설정 가능
- 댐핑 필터는 1~100Hz의 특성 주파수로 진동을 억제합니다.

원격 서비스 및 유지관리

Modbus TCP/IP 프로토콜이 포함된 이더넷 포트를 시운전, 원격 모니터링, 진단 및 유지 관리에 사용할 수 있습니다.



Seven CiA 402 motion profiles are supported

IS810N 다축 솔루션

Product overview

Ultra-fast 전류 루프 (>4 kHz 대역폭)

23 비트 직렬 단일/다회전 절대형 엔코더

Endat 2.2 엔코더 인터페이스 사용 가능

+24 VDC 보조 제어 공급

전원 공급 유닛, 공통 DC 버스

45 kW 정류기 유닛 100 mm 폭

Size 1 드라이브 유닛, 50 mm 폭

Size 2 드라이브 유닛, 100 mm 폭



SIL3

Safety Integrity Level

듀얼 STO 입력,
독립적인 각 축



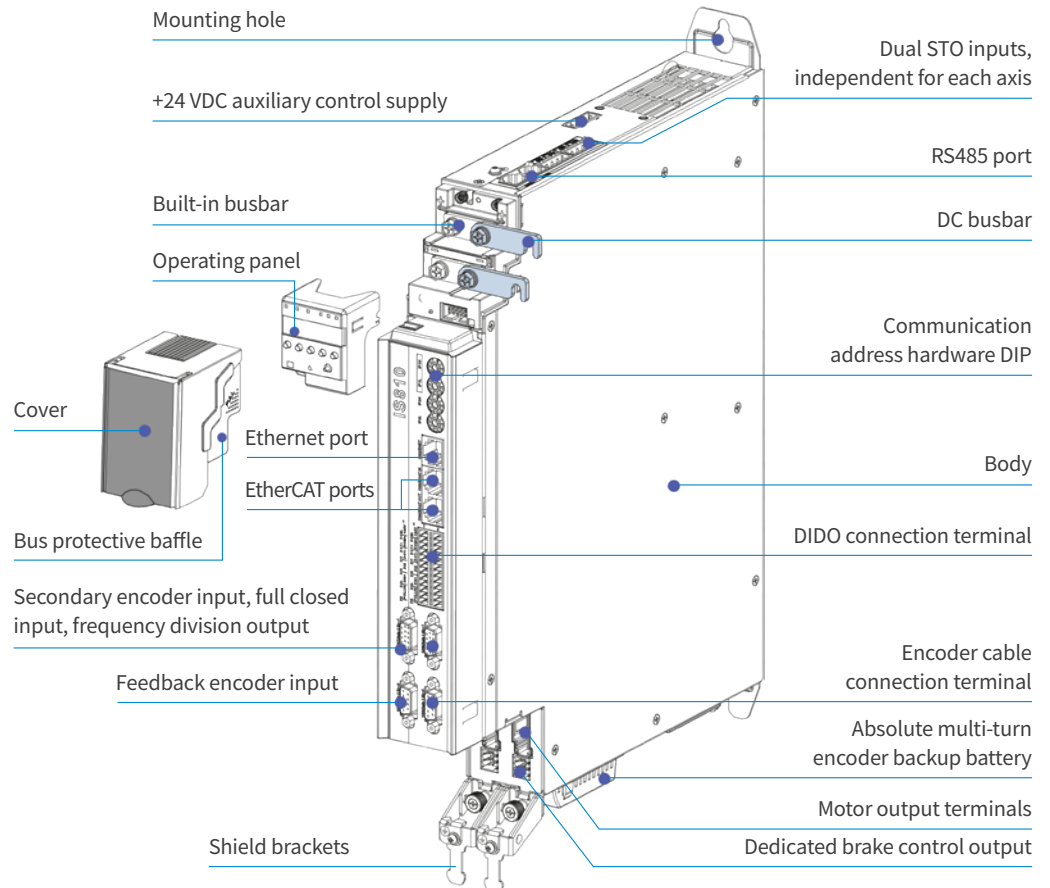
전용 브레이크
제어 출력

IS810N 시리즈 서보 드라이브 주요 특징

고 성능
Circle Current loop bandwidth > 4 kHz *1
Circle Speed loop bandwidth > 2 kHz *1
높은 안전성
Circle Dual input for STO function (SIL 3)
디지털 I/O
Circle 6 DI (2 fast inputs) + 2 DO
전원 공급 전력 범위
Circle Three phase AC 380 V ~ 480 V, +10 ~ -15%, -50/60 Hz
네트워크
Circle EtherCAT® - CiA 402 motion profiles: PP, PV, PT, HM, CSP, CSV, CST
Circle Ethernet Modbus TCP/IP
쉬운 사용법
Circle Fine tuning with PC software (InoDriverShop)
스마트 튜닝
Circle Inertia auto-tuning (on-line/off-line)
Circle Automatic loop gains tuning
Circle Adaptive notch filter (4 filters available)
Circle Automatic/manual damping filter for low frequency resonance
Circle Biquad filter

*1 - Maximum theoretical performance achievable by the drive

IS810N - 1 모듈에 2축

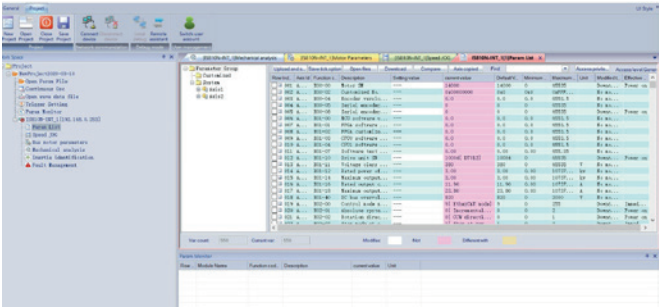


PC 소프트웨어 도구

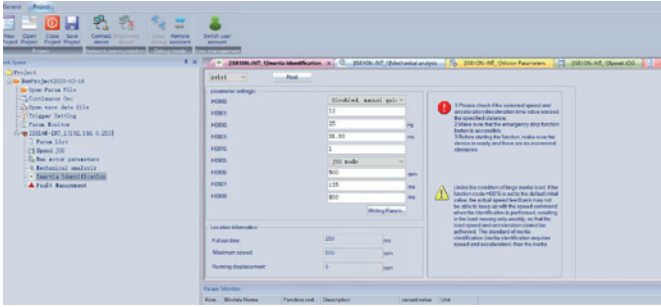
InoDriverShop

InoDriverShop은 Inovance의 PC 기반 소프트웨어이며, Windows 인터페이스를 기반으로 합니다. InoDriverShop은 드라이브 매개변수를 업로드 및 다운로드할 수 있으며 실시간 오실로스코프, 시운전 도구 (e.g. 관성 자동 튜닝) 및 온라인 소프트웨어 업그레이드와 같은 다양한 기타 기능을 제공합니다.

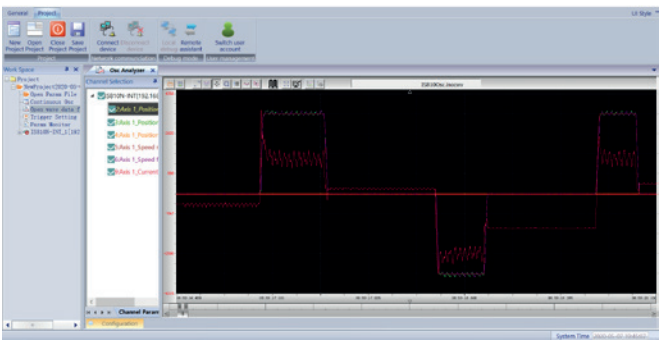
드라이브에서 매개변수 업로드



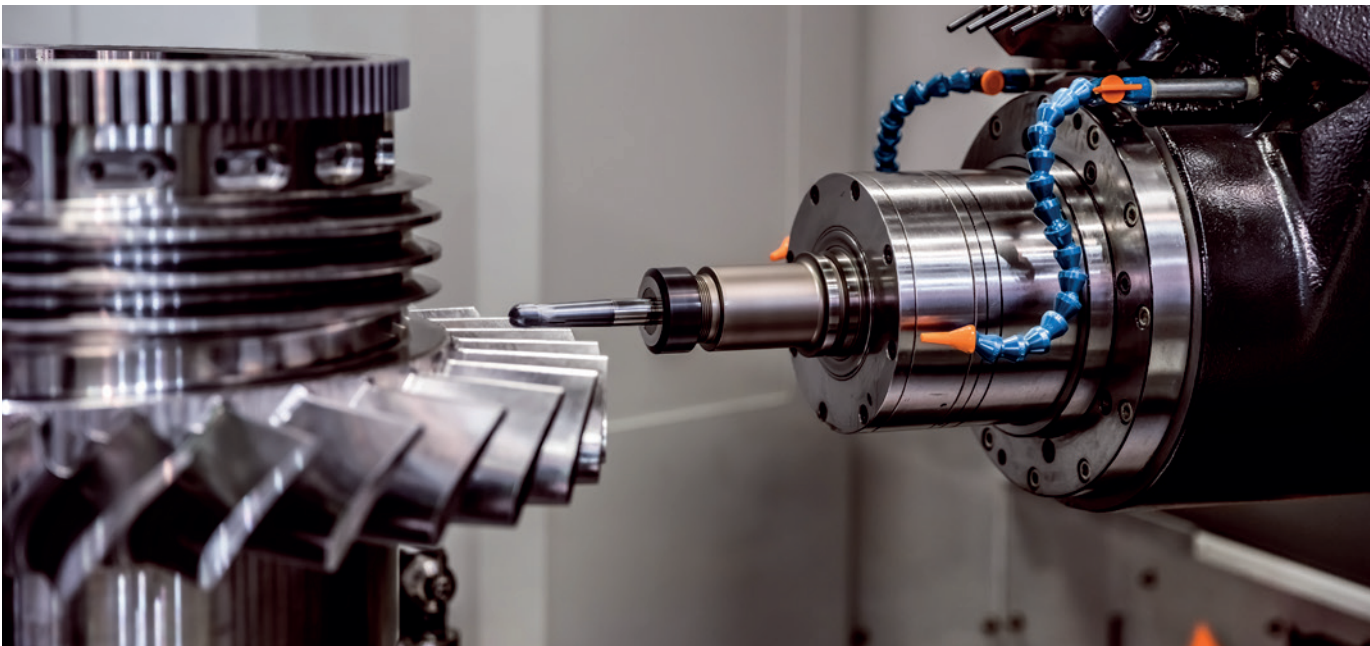
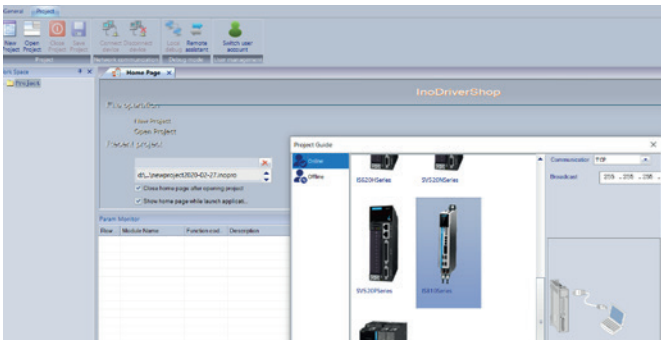
관성 자동 튜닝



실시간 오실로스코프 (oscilloscope)



드라이브 선택 도구



IS810N drive Product ordering code

IS810 N 50M 4T D 3R5 INT

① ② ③ ④ ⑤ ⑥ ⑦

- ① **Servo drive series:**
IS810
- ② **Control board type:**
N: Ethercat
- ③ **Module type:**
50M: drive
- ④ **Voltage supply:**
4T: 380-480 V
- ⑤ **Drive module type:**
S: single
D: dual
- ⑥ **Rated current:**
3R5 3.5 A 037 37 A
5R4 5.4 A 045 45 A
8R4 8.4 A 060 60 A
012 11.9 A 075 75 A
017 16.5 A 091 91 A
021 20.8 A 112 112 A
026 25.7 A 152 152 A
032 32 A
- ⑦ **Model:**
INT: international edition

MD810 rectifier Product ordering code

MD810 - 20M 4T 45 G 1 0 0 - INT

① ② ③ ④ ⑤ ⑥ ⑦ ⑧ ⑨

- ① **Rectifier series:**
MD810
- ② **Module type:**
20M: rectifier
- ③ **Voltage supply:**
4T: 380-480 V
- ④ **Rectifier (rated power):**
22: 22 kW
45: 45 kW
110: 110 kW
160: 160 kW
355: 355 kW
- ⑤ **Model**
G: general model
- ⑥ **Optional functional component**
Rectifier:
0: without built-in braking unit
1: with built-in braking unit (22 & 45 kW only)
- ⑦ **Optional communication component**
Rectifier:
0: built-in RS485 (Modbus-RTU), CANopen and CANlink communications
- ⑧ **Optional features**
Rectifier:
0: no optional features available
- ⑨ **Model:**
INT: international edition

IS810N ratings

Single drives

Model	Size	Rated power (kW)	Rated input DC current (A)	Rated output AC current (A)	Peak output AC current for 3s (A)
Input voltage: 537-679 VDC (operating range: 350-800 VDC); output voltage: 0-480 VAC					
IS810N50M4TS3R5INT	1 (50 mm)	0.85	5	3.5	8.5
IS810N50M4TSSR4INT		1.3	7	5.4	14
IS810N50M4TSR4INT		1.8	12	8.4	20
IS810N50M4TS012INT		2.9	17	12	28
IS810N50M4TS017INT	2 (100 mm)	4.4	22	16.5	42
IS810N50M4TS021INT		5.5	27	20.8	55
IS810N50M4TS026INT		7.5	31	25.7	65
IS810N50M4TS032INT		15	40	32	80
IS810N50M4TS037INT	3 (200 mm)	18.5	46	37	92.5
IS810N50M4TS075INT-P		37	90	75	187.5
IS810N50M4TS090INT		45	105	91	227.5
IS810N50M4TS112INT		55	129	112	280
IS810N50M4TS152INT		75	172	152	380

Dual drives

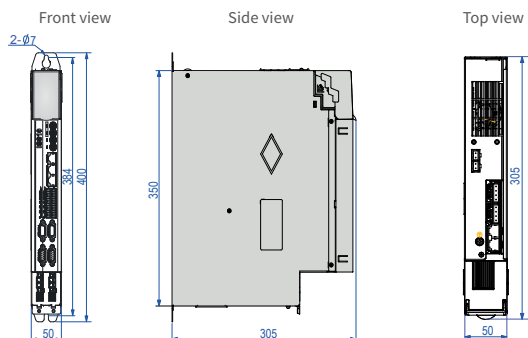
Model	Size	Rated power (kW)	Rated input DC current (A)	Rated output AC current (A)	Peak output AC current for 3s (A)
Input voltage: 537-679 VDC (operating range: 350-800 VDC); output voltage: 0-480 VAC					
IS810N50M4TD3R5INT	1 (50 mm)	0.85	10	3.5	8.5
IS810N50M4TD5R4INT		1.3	14	5.4	14
IS810N50M4TD8R4INT		1.8	24	8.4	20
IS810N50M4TD012INT		2.9	34	12	28
IS810N50M4TD017INT	2 (100 mm)	4.4	44	16.5	42
IS810N50M4TD021INT		5.5	54	20.8	55
IS810N50M4TD026INT		7.5	62	25.7	65
IS810N50M4TD032INT		15	80	32	80
IS810N50M4TD037INT		18.5	92	37	92.5

Rectifiers

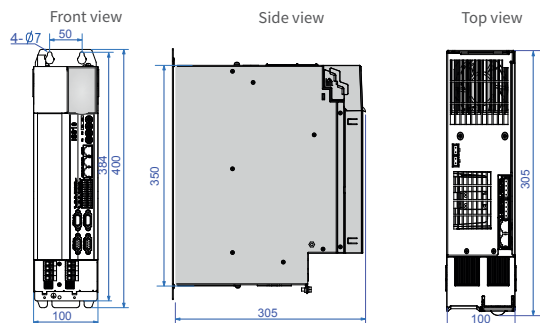
Model	Size	Rated power (kW)	Rated input AC current (A)	Rated output DC current (A)	Braking unit
MD810-20M4T22G1XX-INT	1 (50 mm)	22	59	56	Built-in
MD810-20M4T45G1XX-INT	2 (100 mm)	45	112	110	Built-in
MD810-20M4T110G0XX-INT	3 (200 mm)	110	196	240	MDBUN-60-(5)T x 2
MD810-20M4T160G0XX-INT	4 (300 mm)	160	292	358	MDBUN-90-(5)T x 2
MD810-20M4T355G0XX-INT	5 (180 mm)	355	619	759	MDBUN-200-(5)T x 3

IS810N 시리즈 서보 드라이브 개요

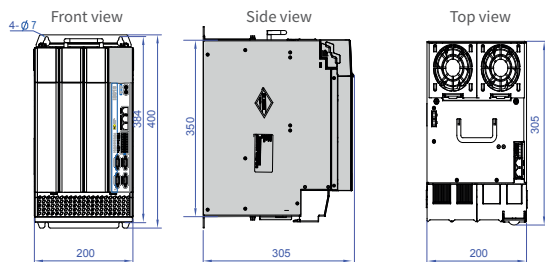
Dimensions of single drive units



Drive unit model (size 1)	Physical dimensions (mm)				Mounting hole (mm)			Mounting hole diameter (mm)	Mass (kg)
	(H2)	(H)	(W)	(D)	(W1)	(W2)	(H1)		
IS810N50M4TS3R5INT	400	350	50	305	-	-	384	Φ7	4.1
IS810N50M4TSSR4INT	400	350	50	305	-	-	384	Φ7	4.1
IS810N50M4TSR8R4INT	400	350	50	305	-	-	384	Φ7	4.1
IS810N50M4TS012INT	400	350	50	305	-	-	384	Φ7	4.1

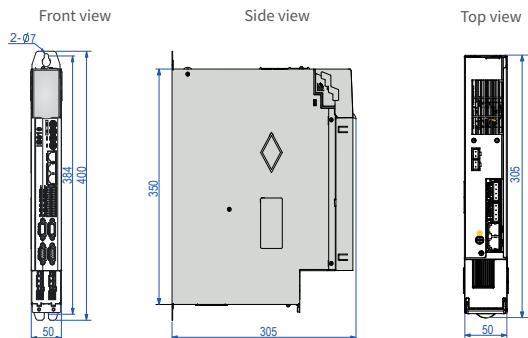


Drive unit model (size 2)	Physical dimensions (mm)				Mounting hole (mm)			Mounting hole diameter (mm)	Mass (kg)
	(H2)	(H)	(W)	(D)	(W1)	(W2)	(H1)		
IS810N50M4TS017INT	400	350	100	305	50	-	384	Φ7	6.8
IS810N50M4TS021INT	400	350	100	305	50	-	384	Φ7	6.8
IS810N50M4TS026INT	400	350	100	305	50	-	384	Φ7	6.8
IS810N50M4TS032INT	400	350	100	305	50	-	384	Φ7	6.8
IS810N50M4TS037INT	400	350	100	305	50	-	384	Φ7	7.4

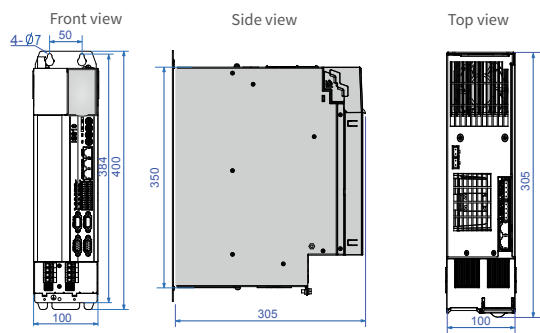


Drive unit model (size 3)	Physical dimensions (mm)				Mounting hole (mm)			Mounting hole diameter (mm)	Mass (kg)
	(H2)	(H)	(W)	(D)	(W1)	(W2)	(H1)		
IS810N50M4TS075INT-P	400	350	200	305	150	-	384	Φ7	16.4
IS810N50M4TS090INT	400	350	200	305	150	-	384	Φ7	16.4
IS810N50M4TS112INT	400	350	200	305	150	-	384	Φ7	17.8
IS810N50M4TS152INT	400	350	200	305	150	-	384	Φ7	18.8

Dimensions of dual drive units

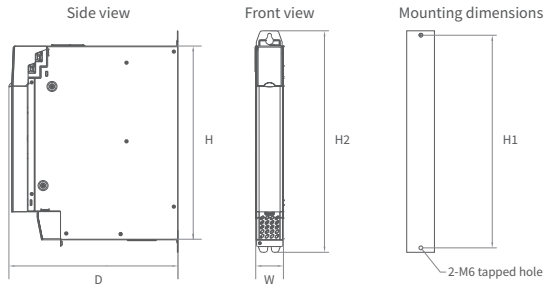


Drive unit model (size 1)	Physical dimensions (mm)				Mounting hole (mm)			Mounting hole diameter (mm)	Mass (kg)
	(H2)	(H)	(W)	(D)	(W1)	(W2)	(H1)		
IS810N50M4TD3R5INT	400	350	50	305	-	-	384	Φ7	4.4
IS810N50M4TD5R4INT	400	350	50	305	-	-	384	Φ7	4.4
IS810N50M4TD8R4INT	400	350	50	305	-	-	384	Φ7	4.4
IS810N50M4TD012INT	400	350	50	305	-	-	384	Φ7	4.4

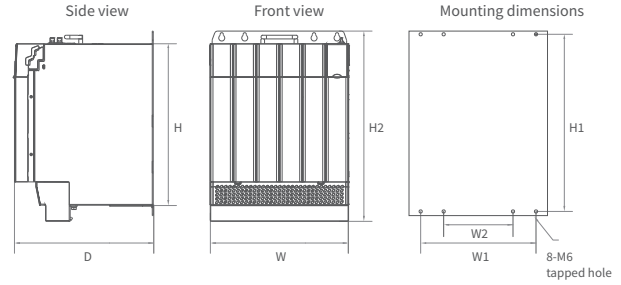


Drive unit model (size 2)	Physical dimensions (mm)				Mounting hole (mm)			Mounting hole diameter (mm)	Mass (kg)
	(H2)	(H)	(W)	(D)	(W1)	(W2)	(H1)		
IS810N50M4TD017INT	400	350	100	305	50	-	384	Φ7	7.2
IS810N50M4TD021INT	400	350	100	305	50	-	384	Φ7	7.2
IS810N50M4TD026INT	400	350	100	305	50	-	384	Φ7	7.2
IS810N50M4TD032INT	400	350	100	305	50	-	384	Φ7	7.2
IS810N50M4TD037INT	400	350	100	305	50	-	384	Φ7	7.8

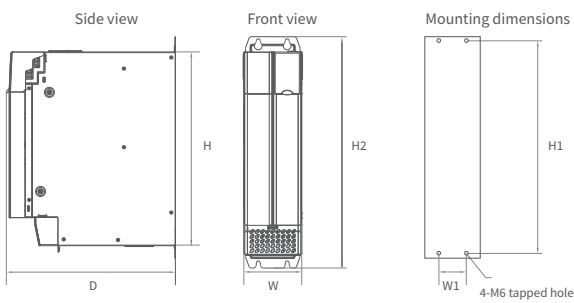
Dimensions of rectifier units



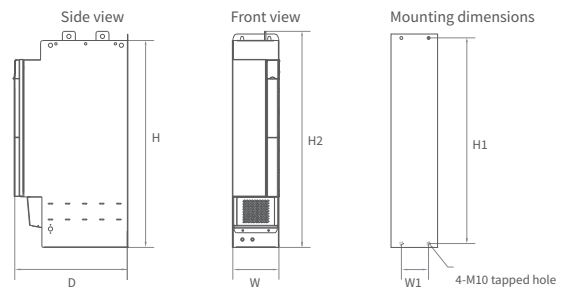
Rectifier unit model (size 1)	Physical dimensions (mm)				Mounting hole (mm)			Mounting hole diameter (mm)	Mass (kg)
	(H2)	(H)	(W)	(D)	(W1)	(W2)	(H1)		
MD810-20M4T22GXXX	400	350	50	305	-	-	384	Φ7	3.8



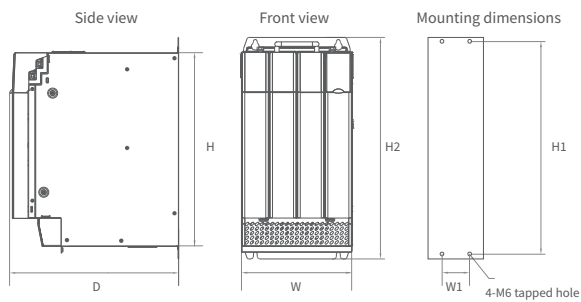
Rectifier unit model (size 4)	Physical dimensions (mm)				Mounting hole (mm)			Mounting hole diameter (mm)	Mass (kg)
	(H2)	(H)	(W)	(D)	(W1)	(W2)	(H1)		
MD810-20M4T160GXXX	400	350	300	305	250	150	384	Φ7	38



Rectifier unit model (size 2)	Physical dimensions (mm)				Mounting hole (mm)			Mounting hole diameter (mm)	Mass (kg)
	(H2)	(H)	(W)	(D)	(W1)	(W2)	(H1)		
MD810-20M4T45GXXX	400	350	100	305	50	-	384	Φ7	8



Rectifier unit model (size 5)	Physical dimensions (mm)				Mounting hole (mm)			Mounting hole diameter (mm)	Mass (kg)
	(H2)	(H)	(W)	(D)	(W1)	(W2)	(H1)		
MD810-20M4T355GXXX	835	800	180	445	105	-	795	Φ12	65



Rectifier unit model (size 3)	Physical dimensions (mm)				Mounting hole (mm)			Mounting hole diameter (mm)	Mass (kg)
	(H2)	(H)	(W)	(D)	(W1)	(W2)	(H1)		
MD810-20M4T110GXXX	400	350	200	305	150	-	384	Φ7	18.4



IS810N-MS1 모터 선택 차트

Motor base speed (RPM)	Motor maximum speed (RPM)	Motor power (W)	Motor rated torque (N·m)	Motor peak torque (N·m)	Motor frame size (mm)	Rotor inertia (0.0001x kg·m ²)	MS1 motor type	IS810N type**	IS810N rated current (A)	IS810N peak current (A)	Size	Dimensions H x W x D (mm)
3,000	6,000	50	0.16	0.56	40x40	0.026	MS1H1-05B30CB-A330Z	IS810N50M4T_3R5INT	3.5	8.50	1	400 x 50 x 305
3,000	6,000	100	0.32	1.12	40x40	0.041	MS1H1-10B30CB-A330Z	IS810N50M4T_3R5INT	3.5	8.50	1	400 x 50 x 305
3,000	6,000	200	0.64	2.24	60x60	0.207	MS1H1-20B30CB-A331Z	IS810N50M4T_3R5INT	3.5	8.50	1	400 x 50 x 305
3,000	6,000	400	1.27	3.75	60x60	0.376	MS1H1-40B30CB-A331Z	IS810N50M4T_3R5INT	3.5	8.50	1	400 x 50 x 305
3,000	6,000	400	1.27	4.46	60x60	0.376	MS1H1-40B30CB-A331Z	IS810N50M4T_5R4INT	5.4	14.00	1	400 x 50 x 305
3,000	6,000	400	1.27	3.75	60x60	0.657	MS1H4-40B30CB-A331Z	IS810N50M4T_3R5INT	3.5	8.50	1	400 x 50 x 305
3,000	6,000	400	1.27	4.46	60x60	0.657	MS1H4-40B30CB-A331Z	IS810N50M4T_5R4INT	5.4	14.00	1	400 x 50 x 305
3,000	6,000	550	1.75	5.72	80x80	1.06	MS1H1-55B30CB-A331Z*	IS810N50M4T_5R4INT	5.4	14.00	1	400 x 50 x 305
3,000	6,000	750	2.39	6.93	80x80	1.38	MS1H1-75B30CB-A331Z	IS810N50M4T_5R4INT	5.4	14.00	1	400 x 50 x 305
3000	6000	750	2.39	8.36	80x80	1.38	MS1H1-75B30CB-A331Z	IS810N50M4T_8R4INT	8.4	20.00	1	400 x 50 x 305
3000	6000	750	2.39	6.93	80x80	2	MS1H4-75B30CB-A331Z	IS810N50M4T_5R4INT	5.4	14.00	1	400 x 50 x 305
3,000	6,000	750	2.39	8.36	80x80	2	MS1H4-75B30CB-A331Z	IS810N50M4T_8R4INT	8.4	20.00	1	400 x 50 x 305
3,000	6,000	1,000	3.18	7.93	80x80	1.75	MS1H1-10C30CB-A331Z*	IS810N50M4T_8R4INT	8.4	20.00	1	400 x 50 x 305
3,000	6,000	1,000	3.18	11.10	80x80	1.75	MS1H1-10C30CB-A331Z*	IS810N50M4T_012INT	12.0	28.00	1	400 x 50 x 305
3,000	6,000	1,000	3.18	9.54	100x100	1.87	MS1H2-10C30CD-A331Z	IS810N50M4T_5R4INT	5.4	14.00	1	400 x 50 x 305
3,000	5,000	1,500	4.9	14.70	100x100	2.46	MS1H2-15C30CD-A331Z	IS810N50M4T_5R4INT	5.4	14.00	1	400 x 50 x 305
3,000	5,000	2,000	6.36	19.10	100x100	3.06	MS1H2-20C30CD-A331Z	IS810N50M4T_8R4INT	8.4	20.00	1	400 x 50 x 305
3,000	5,000	2,500	7.96	19.12	100x100	3.65	MS1H2-25C30CD-A331Z	IS810N50M4T_8R4INT	8.4	20.00	1	400 x 50 x 305
3,000	5,000	2,500	7.96	23.90	100x100	3.65	MS1H2-25C30CD-A331Z	IS810N50M4T_012INT	12.0	28.00	1	400 x 50 x 305
3,000	5,000	3,000	9.8	27.44	130x130	7.72	MS1H2-30C30CD-A331Z	IS810N50M4T_012INT	12.0	28.00	1	400 x 50 x 305
3,000	5,000	3,000	9.8	29.40	130x130	7.72	MS1H2-30C30CD-A331Z	IS810N50M4T_017INT	16.5	42.00	2	400 x 100 x 305
3,000	5,000	4,000	12.6	37.80	130x130	12.1	MS1H2-40C30CD-A331Z	IS810N50M4T_017INT	16.5	42.00	2	400 x 100 x 305
3,000	5,000	5,000	15.8	41.65	130x130	15.4	MS1H2-50C30CD-A331Z	IS810N50M4T_017INT	16.5	42.00	2	400 x 100 x 305
3,000	5,000	5,000	15.8	47.60	130x130	15.4	MS1H2-50C30CD-A331Z	IS810N50M4T_021INT	20.8	55.00	2	400 x 100 x 305
1,500	3,000	850	5.39	13.50	130x130	13.3	MS1H3-85B15CD-A331Z	IS810N50M4T_3R5INT	3.5	8.50	1	400 x 50 x 305
1,500	3,000	1,300	8.34	20.85	130x130	17.8	MS1H3-13C15CD-A331Z	IS810N50M4T_5R4INT	5.4	14.00	1	400 x 50 x 305
1,500	3,000	1,800	11.5	28.75	130x130	25	MS1H3-18C15CD-A331Z	IS810N50M4T_8R4INT	8.4	20.00	1	400 x 50 x 305
1,500	3,000	2,900	18.6	37.20	180x180	55	MS1H3-29C15CD-A331Z	IS810N50M4T_012INT	12.0	28.00	1	400 x 50 x 305
1,500	3,000	4,400	28.4	71.10	180x180	88.9	MS1H3-44C15CD-A331Z	IS810N50M4T_017INT	16.5	42.00	2	400 x 100 x 305
1,500	3,000	5,500	35	87.60	180x180	107	MS1H3-55C15CD-A331Z	IS810N50M4T_021INT	20.8	55.00	2	400 x 100 x 305
1,500	3,000	7,500	48	119.00	180x180	141	MS1H3-75C15CD-A331Z	IS810N50M4T_026INT	25.7	65.00	2	400 x 100 x 305

*Motor does not have an option with a brake **All drives are available in single axis (TS) or dual axes (TD)
To select motors with higher ratings, please consult with your local Inovance representative

MS1 모터 Product ordering code

MS1 H1 - 40B 30C B - A3 3 1 Z - INT

① ② ③ ④ ⑤ ⑥ ⑦ ⑧ ⑨ ⑩

① **Motor series:**
MS1 series servo motor

② **Type:**
H1: low inertia, small capacity
H2: low inertia, medium capacity
H3: medium inertia, medium capacity
H4: medium inertia, small capacity

③ **Rated power (W)**
One number and one letter
A: x1
B: x10
C: x100
D: x1000
E: x10000
Example: 40B: 400 W

④ **Rated speed (RPM)**
One number and one letter
A: x1
B: x10
C: x100
D: x1000
E: x10000
e.g. 30C: 3000 RPM

⑤ **Voltage class**
B: 220 V
D: 380 V

⑥ **Encoder type**
One number and one letter
A3: multi-turn absolute encoder

⑦ **Shaft connection mode**
1: plain shaft
2: solid, keyed
3: solid, keyed with threaded holes
5: solid with threaded holes

⑧ **Brake, reducer and oil seal**
0: none
1: oil seal
2: brake
4: oil seal and brake

⑨ **Motor specification**
Z: terminal type

⑩ **Model:**
INT: international edition

IS810N-ISMG 모터 선택 차트

Motor base speed (RPM)	Motor maximum speed (RPM)	Motor power (kW) S1 duty	Motor power (kW) S4 duty	Motor rated torque (N·m) S1 duty	Motor rated torque (N·m) S4 duty	Motor peak torque (N·m)	Motor frame size (mm)	Rotor inertia (0.0001x-kgm ²)	ISMG motor type	IS810N type	IS810N rated current (A)	IS810N peak current (A)	Size	Dimensions H x W x D (mm)
1500	1800	7.9	9.5	50	60	135	200x200	75	ISMG1-95C15CD-A331FA	IS810N50M4T_017INT**	16.5	42	2	400 x 100 x 305
2000	2400	10.5	12	50	60	135	200x200	75	ISMG1-12D20CD-A331FA	IS810N50M4T_021INT**	20.8	55	2	400 x 100 x 305
1500	1800	11.8	14	75	90	203	200x200	90	ISMG1-14D15CD-A331FA	IS810N50M4T_026INT**	25.7	65	2	400 x 100 x 305
1500	1800	14.5	17	92	110	248	200x200	105	ISMG1-17D15CD-A331FA	IS810N50M4T_032INT**	32	80	2	400 x 100 x 305
2000	2400	15.7	18	75	90	203	200x200	90	ISMG1-18D20CD-A331FA	IS810N50M4T_032INT**	32	80	2	400 x 100 x 305
1500	1800	18.1	22	115	135	311	200x200	120	ISMG1-22D15CD-A331FA	IS810N50M4T_037INT**	37	92.5	2	400 x 100 x 305
2000	2400	19.3	23	92	110	248	200x200	105	ISMG1-23D20CD-A331FA	IS810N50M4TS075INT-P	75	187.5	3	400 x 200 x 305
2000	2400	24.1	28	115	135	311	200x200	120	ISMG1-28D20CD-A331FA	IS810N50M4TS075INT-P	75	187.5	3	400 x 200 x 305
1500	1800	23.6	30	150	195	405	200x200	150	ISMG1-30D15CD-A331FA	IS810N50M4TS075INT-P	75	187.5	3	400 x 200 x 305
2000	2400	31.4	41	150	195	405	200x200	150	ISMG1-41D20CD-A331FA*	IS810N50M4TS075INT-P	75	187.5	3	400 x 200 x 305
1500	1800	26.7	31	170	200	366	266x266	296	ISMG2-31D15CD-A331FA*	IS810N50M4TS075INT-P	75	187.5	3	400 x 200 x 305
2000	2400	35.6	42	170	200	366	266x266	296	ISMG2-42D20CD-A331FA*	IS810N50M4TS075INT-P	75	187.5	3	400 x 200 x 305
1500	1800	36.1	42	230	270	495	266x266	368	ISMG2-42D15CD-A331FA*	IS810N50M4TS075INT-P	75	187.5	3	400 x 200 x 305
1500	1800	44.8	52	285	335	613	266x266	434	ISMG2-52D15CD-A331FA*	IS810N50M4TS090INT	91	227.5	3	400 x 200 x 305
2000	2400	48.2	57	230	270	495	266x266	368	ISMG2-57D20CD-A331FA*	IS810N50M4TS090INT	91	227.5	3	400 x 200 x 305
1500	1800	53.4	60	340	385	731	266x266	500	ISMG2-60D15CD-A331FA*	IS810N50M4TS112INT	112	280	3	400 x 200 x 305
2000	2400	59.7	70	285	335	613	266x266	434	ISMG2-70D20CD-A331FA*	IS810N50M4TS152INT	152	380	3	400 x 200 x 305
2000	2400	71.2	80	340	385	731	266x266	500	ISMG2-80D20CD-A331FA*	IS810N50M4TS152INT	152	380	3	400 x 200 x 305
1500	1800	69.1	80	440	510	946	266x266	640	ISMG2-80D15CD-A331FA*	IS810N50M4TS152INT	152	380	3	400 x 200 x 305

* Motor does not have an option with a brake

** These drives are available in single axis (TS) or dual axes (TD)



ISMG 모터 Product ordering code

ISM G1 - 95C 15C D - A3 3 1 F A

① ② ③ ④ ⑤ ⑥ ⑦ ⑧ ⑨ ⑩

① **Product series:**
ISM: ISM series
servo motor

② **Flange size (mm):**
G1: 200 x 200
G2: 266 x 266

③ **Rated Power (W)**
C: x 100
D: x 1000

④ **Rated speed (rpm)**
C: x 100
D: x 1000

⑤ **Voltage class**
B: 220 V
D: 380 V

⑥ **Encoder type**
A3: 23-bit absolute
R1: Resolver

⑦ **Shaft connection**
3: Keyed + tapped hole
A: Keyed + tapped hole
salient-pole motor

⑧ **Brake, gear, oil seal**
1: Oil seal
4: Oil seal + brake

⑨ **Customised feature**
F: Forced ventilation

⑩ **Version**
A: Version A

IS810N

Cable selection chart

IS810N drive type code	Servo motor type code	23 bit multi-turn encoder cables*	Power cables for motors without brake**	Power cables for motors with brake**
IS810N50M4TD3R5INT dual axis	MS1H3-85B15CD-XXXXZ	S6-L-P021-XX.X-YY-INT	S6-L-M111-XX.X-ZZ-INT	S6-L-B111-XX.X-ZZ-INT
IS810N50M4TD3R5INT dual axis	MS1H1-05B30CB-XXXXZ	S6-L-P024-XX.X-YY-INT (front outlet) S6-L-P025-XX.X-YY-INT (back outlet)	S6-L-M107-XX.X-ZZ-INT (front outlet) S6-L-M108-XX.X-ZZ-INT (back outlet)	S6-L-B107-XX.X-ZZ-INT (front outlet) S6-L-B108-XX.X-ZZ-INT (back outlet)
IS810N50M4TD3R5INT dual axis	MS1H1-10B30CB-XXXXZ	S6-L-P024-XX.X-YY-INT (front outlet) S6-L-P025-XX.X-YY-INT (back outlet)	S6-L-M107-XX.X-ZZ-INT (front outlet) S6-L-M108-XX.X-ZZ-INT (back outlet)	S6-L-B107-XX.X-ZZ-INT (front outlet) S6-L-B108-XX.X (back outlet)
IS810N50M4TD3R5INT dual axis	MS1H1-20B30CB-XXXXZ	S6-L-P024-XX.X-YY-INT (front outlet) S6-L-P025-XX.X-YY-INT (back outlet)	S6-L-M107-XX.X-ZZ-INT (front outlet) S6-L-M108-XX.X-ZZ-INT (back outlet)	S6-L-B107-XX.X-ZZ-INT (front outlet) S6-L-B108-XX.X-ZZ-INT (back outlet)
IS810N50M4TD3R5INT dual axis	MS1H1-40B30CB-XXXXZ	S6-L-P024-XX.X-YY-INT (front outlet) S6-L-P025-XX.X-YY-INT (back outlet)	S6-L-M107-XX.X-ZZ-INT (front outlet) S6-L-M108-XX.X-ZZ-INT (back outlet)	S6-L-B107-XX.X-ZZ-INT (front outlet) S6-L-B108-XX.X-ZZ-INT (back outlet)
IS810N50M4TD3R5INT dual axis	MS1H4-40B30CB-XXXXZ	S6-L-P024-XX.X-YY-INT (front outlet) S6-L-P025-XX.X-YY-INT (back outlet)	S6-L-M107-XX.X-ZZ-INT (front outlet) S6-L-M108-XX.X-ZZ-INT (back outlet)	S6-L-B107-XX.X-ZZ-INT (front outlet) S6-L-B108-XX.X-ZZ-INT (back outlet)
IS810N50M4TD5R4INT dual axis	MS1H2-10C30CD-XXXXZ	S6-L-P021-XX.X-YY-INT	S6-L-M111-XX.X-ZZ-INT	S6-L-B111-XX.X-ZZ-INT
IS810N50M4TD5R4INT dual axis	MS1H2-15C30CD-XXXXZ	S6-L-P021-XX.X-YY-INT	S6-L-M111-XX.X-ZZ-INT	S6-L-B111-XX.X-ZZ-INT
IS810N50M4TD5R4INT dual axis	MS1H3-13C15CD-XXXXZ	S6-L-P021-XX.X-YY-INT	S6-L-M111-XX.X-ZZ-INT	S6-L-B111-XX.X-ZZ-INT
IS810N50M4TD5R4INT dual axis	MS1H1-55B30CB-XXXXZ	S6-L-P024-XX.X-YY-INT (front outlet) S6-L-P025-XX.X-YY-INT (back outlet)	S6-L-M107-XX.X-ZZ-INT (front outlet) S6-L-M108-XX.X-ZZ-INT (back outlet)	S6-L-B107-XX.X-ZZ-INT (front outlet) S6-L-B108-XX.X-ZZ-INT (back outlet)
IS810N50M4TD5R4INT dual axis	MS1H1-75B30CB-XXXXZ	S6-L-P024-XX.X-YY-INT (front outlet) S6-L-P025-XX.X-YY-INT (back outlet)	S6-L-M107-XX.X-ZZ-INT (front outlet) S6-L-M108-XX.X-ZZ-INT (back outlet)	S6-L-B107-XX.X-ZZ-INT (front outlet) S6-L-B108-XX.X-ZZ-INT (back outlet)
IS810N50M4TD5R4INT dual axis	MS1H4-75B30CB-XXXXZ	S6-L-P024-XX.X-YY-INT (front outlet) S6-L-P025-XX.X-YY-INT (back outlet)	S6-L-M107-XX.X-ZZ-INT (front outlet) S6-L-M108-XX.X-ZZ-INT (back outlet)	S6-L-B107-XX.X-ZZ-INT (front outlet) S6-L-B108-XX.X-ZZ-INT (back outlet)
IS810N50M4TD8R4INT dual axis	MS1H2-10C30CB-XXXXZ	S6-L-P021-XX.X-YY-INT	S6-L-M111-XX.X-ZZ-INT	S6-L-B111-XX.X-ZZ-INT
IS810N50M4TD8R4INT dual axis	MS1H2-20C30CD-XXXXZ	S6-L-P021-XX.X-YY-INT	S6-L-M111-XX.X-ZZ-INT	S6-L-B111-XX.X-ZZ-INT
IS810N50M4TD8R4INT dual axis	MS1H2-25C30CD-XXXXZ	S6-L-P021-XX.X-YY-INT	S6-L-M111-XX.X-ZZ-INT	S6-L-B111-XX.X-ZZ-INT
IS810N50M4TD8R4INT dual axis	MS1H3-18C15CD-XXXXZ	S6-L-P021-XX.X-YY-INT	S6-L-M111-XX.X-ZZ-INT	S6-L-B111-XX.X-ZZ-INT
IS810N50M4TD8R4INT dual axis	MS1H3-85B15CB-XXXXZ	S6-L-P021-XX.X-YY-INT	S6-L-M111-XX.X-ZZ-INT	S6-L-B111-XX.X-ZZ-INT
IS810N50M4TD8R4INT dual axis	MS1H1-10C30CB-XXXXZ	S6-L-P024-XX.X-YY-INT (front outlet) S6-L-P025-XX.X-YY-INT (back outlet)	S6-L-M107-XX.X-ZZ-INT (front outlet) S6-L-M108-XX.X-ZZ-INT (back outlet)	S6-L-B107-XX.X-ZZ-INT (front outlet) S6-L-B108-XX.X-ZZ-INT (back outlet)
IS810N50M4TD012INT dual axis	MS1H2-15C30CB-XXXXZ	S6-L-P021-XX.X-YY-INT	S6-L-M111-XX.X-ZZ-INT	S6-L-B111-XX.X-ZZ-INT
IS810N50M4TD012INT dual axis	MS1H2-30C30CD-XXXXZ	S6-L-P021-XX.X-YY-INT	S6-L-M111-XX.X-ZZ-INT	S6-L-B111-XX.X-ZZ-INT
IS810N50M4TD012INT dual axis	MS1H3-13C15CB-XXXXZ	S6-L-P021-XX.X-YY-INT	S6-L-M111-XX.X-ZZ-INT	S6-L-B111-XX.X-ZZ-INT
IS810N50M4TD012INT dual axis	MS1H3-29C15CD-XXXXZ	S6-L-P021-XX.X-YY-INT	S6-L-M122-XX.X-ZZ-INT	S6-L-B122-XX.X-ZZ-INT
IS810N50M4TD017INT dual axis	ISMG1-95C15CD-XXXXFA	S6-L-P021-XX.X-YY-INT	Custom made	Custom made
IS810N50M4TD017INT dual axis	MS1H2-40C30CD-XXXXZ	S6-L-P021-XX.X-YY-INT	S6-L-M111-XX.X-ZZ-INT	S6-L-B111-XX.X-ZZ-INT
IS810N50M4TD017INT dual axis	MS1H2-50C30CD-XXXXZ	S6-L-P021-XX.X-YY-INT	S6-L-M111-XX.X-ZZ-INT	S6-L-B111-XX.X-ZZ-INT
IS810N50M4TD017INT dual axis	MS1H3-44C15CD-XXXXZ	S6-L-P021-XX.X-YY-INT	S6-L-M122-XX.X-ZZ-INT	S6-L-B122-XX.X-ZZ-INT
IS810N50M4TD021INT dual axis	ISMG1-12D20CD-XXXXFA	S6-L-P021-XX.X-YY-INT	Custom made	Custom made
IS810N50M4TD021INT dual axis	MS1H3-55C15CD-XXXXZ	S6-L-P021-XX.X-YY-INT	S6-L-M122-XX.X-ZZ-INT	S6-L-B122-XX.X-ZZ-INT
IS810N50M4TD026INT dual axis	ISMG1-14D15CD-XXXXFA	S6-L-P021-XX.X-YY-INT	Custom made	Custom made
IS810N50M4TD026INT dual axis	MS1H3-75C15CD-XXXXZ	S6-L-P021-XX.X-YY-INT	S6-L-M122-XX.X-ZZ-INT	S6-L-B122-XX.X-ZZ-INT
IS810N50M4TD032INT dual axis	ISMG1-17D15CD-XXXXFA	S6-L-P021-XX.X-YY-INT	Custom made	Custom made
IS810N50M4TD032INT dual axis	ISMG1-18D20CD-XXXXFA	S6-L-P021-XX.X-YY-INT	Custom made	Custom made
IS810N50M4TD037INT dual axis	ISMG1-22D15CD-XXXXFA	S6-L-P021-XX.X-YY-INT	Custom made	Custom made
IS810N50M4TS075INT-P single axis	ISMG1-23D20CD-XXXXFA	S6-L-P021-XX.X-YY-INT	Custom made	Custom made
IS810N50M4TS075INT-P single axis	ISMG1-28D20CD-XXXXFA	S6-L-P021-XX.X-YY-INT	Custom made	Custom made
IS810N50M4TS075INT-P single axis	ISMG1-30D15CD-XXXXFA	S6-L-P021-XX.X-YY-INT	Custom made	Custom made
IS810N50M4TS075INT-P single axis	ISMG1-41D20CD-XXXXFA	S6-L-P021-XX.X-YY-INT	Custom made	Custom made
IS810N50M4TS075INT-P single axis	ISMG2-31D15CD-XXXXFA	S6-L-P021-XX.X-YY-INT	Custom made	Custom made
IS810N50M4TS075INT-P single axis	ISMG2-42D15CD-XXXXFA	S6-L-P021-XX.X-YY-INT	Custom made	Custom made
IS810N50M4TS075INT-P single axis	ISMG2-42D20CD-XXXXFA	S6-L-P021-XX.X-YY-INT	Custom made	Custom made
IS810N50M4TS091INT single axis	ISMG2-52D15CD-XXXXFA	S6-L-P021-XX.X-YY-INT	Custom made	Custom made
IS810N50M4TS091INT single axis	ISMG2-57D20CD-XXXXFA	S6-L-P-21-XX.X-YY-INT	Custom made	Custom made
IS810N50M4TS112INT single axis	ISMG2-60D15CD-XXXXFA	S6-L-P021-XX.X-YY-INT	Custom made	Custom made
IS810N50M4TS152INT single axis	ISMG2-70D20CD-XXXXFA	S6-L-P021-XX.X-YY-INT	Custom made	Custom made
IS810N50M4TS152INT single axis	ISMG2-80D15CD-XXXXFA	S6-L-P021-XX.X-YY-INT	Custom made	Custom made
IS810N50M4TS152INT single axis	ISMG2-80D20CD-XXXXFA	S6-L-P021-XX.X-YY-INT	Custom made	Custom made
IS810N50M4TS152INT single axis	ISMG2-94D15CD-XXXXFA	S6-L-P021-XX.X-YY-INT	Custom made	Custom made

Notes:

In all part codes throughout this table:

- XX.X indicates the cable length. Standard specifications are 3.0 m, 5.0 m, 10.0 m. Customized lengths and specifications documents are available on request.
- S6 can be replaced by S6E or S6I according to customer requirements. Consult with your local Inovance representative for more information.

*Throughout this column, YY in the part number can be replaced with either TO for PVC cable or U for PUR cable, according to customer requirements.

** Throughout this column, ZZ in the part number can be replaced with either TS for PVC cable or US for PUR cable.



통신 케이블

Cable type	Item code	L (mm)	Appearance
Ethernet communications cable	S6-L-T04-0.3	300	
	S6-L-T04-3.0	3,000	

커넥터 & 배터리 키트

Model	Connector kit:	Battery set for absolute encoder back up
MS1H2	S6-C2 (CN1 & CN2 terminal, 20-18 pin & 20-29 pin connector)	S6-C9 S6-C9-NB (without battery)
MS1H3 (1.8 kW & below)	S6-C2 (CN1 & CN2 terminal, 20-18 pin & 20-29 pin connector)	
MS1H3 (2.9 kW)	S6-C3 (CN1 & CN2 terminal, 20-22 pin & 20-29 pin connector)	
MS1H3 (above 2.9 kW)		

INOVANCE



2003
founded



IPO:2010
Shenzhen, China



20,256
employees



\$3,405 million
revenues in 2022



No.5
for servo drives
globally in 2022*



No.8
for LV AC drives
globally in 2022*



3.36 million
servo drives and
motors shipped in 2022



2,248,000
EV powertrains
shipped in 2022



17,000+
industrial robots
delivered by end of 2022



13,598
MV drives delivered
by end of 2022



4.3 million
AC drives
shipped in 2022



100+
Inovance's products are in
use in 100+ countries

*According to leading market research company Interact Analysis

For more information, please contact our local offices.

이노밴스 테크놀로지 코리아 주식회사
Inovance Technology Korea Co.,Ltd.

www.inovance.co.kr

서울특별시 영등포구 선유로130 에이스하이테크 3차 1003호

고객 센터 : 02-3489-8850

이메일 : INOVANCEKR@inovance.eu



Kakao Channel



Linked page



Website