

INOVANCE

MD520 AC 드라이브 High performance 범용 AC drive

- 폭 넓은 작동 전압 및 제품 범위
- 향상된 내구성
- IM 모터 및 PM 모터 제어 통합
- 내장 DC 리액터



MD520 - features & functions

- IM 모터 및 PM 모터 제어 :
 - 오픈 루프 V/F (IM 모터만 해당) 및 SVC
 - 클로즈 루프 FVC
- 듀얼 레이트 : 중부하(과부하: 150%/1분) 및 경부하(과부하: 110%/1분)
- 기동 토크
 - SVC의 경우, 0.25 Hz 에서 150%
 - FVC의 경우, 0 Hz 에서 180%
- 통신 옵션 :
 - Modbus-RTU
 - Modbus-TCP
 - PROFIBUS-DP
 - CANopen
 - CANlink
 - PROFINET
 - EtherCAT
 - Ethernet/IP

- 외부 RFI 필터에 대한 카테고리 C2 준수, 필터가 내장된 등급은 사항을 준수 카테고리 C3*¹ 사항을 준수
- 다이내믹 제동 유닛 내장, 최대 75kW (400V) 또는 37kW (200V)
- 최대 50°C(40°C이상시 디레이팅)의 주변온도에서 작동)*²
- 양극성 아날로그 입력 표준 (-10~+10V)
- PTC 입력 표준
- Simplified parameters for easy start up
- 4개의 독립적인 S-커브
- 유연한 I/Os 프로그래밍
- 사용자 프로그래밍 가능 로직
- 가변 DC-인젝션 제동
- 종합 트립 진단
- 출력 주파수 : 599 Hz
- 어플리케이션 전용 기능 :
 - 마스터 - 슬레이브 기능 (토크, 속도)
 - 섬유 우물 컨트롤
- 제동 제어 로직
- 4 세트 모토 파라미터
- 자동 토크 부스트
- PC 기반 소프트웨어 : 단순화된 시작 환경과 백업 *³

*1 보다 자세한 EMC 컴플라이언스 관련 정보는 현지 Inovance 담당자와 상담 하십시오

*2 더 높은 주변 온도에서 작동하려면, 현지 Inovance 담당자와 상담 하십시오

*3 UUSB-RS485 어댑터가 필요합니다. MDKE-10 또는 SOP-20 키패드가 위 목적으로 사용할 수 있습니다



NEW: built-in colour LED keypad

- 적용가능한 최대 선명도 디스플레이
- 여러가지 정보를 동시에 표시 (ex. 드라이브의 상태 및 작동 정보)
- 사용자 친화적 버튼 키

General specifications

Heavy duty ratings, 150% overload

Voltage class		Three phase 380 to 480 Vac										
Drive model: MD520-4TxxxB(S)-INT		0.4B(S)	0.7B(S)	1.1B(S)	1.5B(S)	2.2B(S)	3.0B(S)	3.7B(S)	5.5B(S)	7.5B(S)	11B(S)	15B(S)
Frame size		T1 ^{*1}					T2		T3		T4	
Drive input	Rated input voltage	Three phase 380 to 480 Vac -15% to +10%										
	Rated input current [A]	1.8	2.4	3.7	4.6	6.3	9.0	11.4	16.7	21.9	32.2	41.3
	Power capacity [kVA]	2	2.8	4.1	5.0	6.7	9.5	12	17.5	22.8	33.4	42.8
Rated input frequency		50/60 Hz \pm 5%										
Drive output	Applicable motor [kW]	0.4	0.75	1.1	1.5	2.2	3.0	3.7	5.5	7.5	11	15
	Output current [A] ^{*2}	1.5	2.1	3.1	3.8	5.1	7.2	9.0	13.0	17.0	25.0	32.0
	Default carrier frequency [kHz]	6	6	6	6	6	6	6	6	6	6	6
	Overload capacity	150% for 60 s										
	Max. output voltage	Three phase 380 to 480 Vac (proportional to input voltage)										
Max. output frequency		599 Hz										
Braking resistor	Recommended power [kW]	0.08	0.14	0.22	0.3	0.44	0.6	0.74	1.1	1.5	2.2	3
	Minimum resistance [Ω]	96	96	96	96	64	64	32	32	32	24	24
Braking unit		Built-in										
Enclosure		IP 20										

Normal duty ratings, 110% overload



Voltage class		Three phase 380 to 480 Vac										
Drive model: MD520-4TxxxB(S)-INT		0.4B(S)	0.7B(S)	1.1B(S)	1.5B(S)	2.2B(S)	3.0B(S)	3.7B(S)	5.5B(S)	7.5B(S)	11B(S)	15B(S)
Frame size		T1 ^{*1}					T2		T3		T4	
Drive input	Rated input voltage	Three phase 380 to 480 Vac -15% to +10%										
	Rated input current [A]	2.5	3.7	4.6	6.4	9.1	11.3	15.9	22.4	32.9	39.7	44.0
	Power capacity [kVA]	2.3	3.4	4.2	5.9	8.3	10.4	15.5	20.5	30.2	38.2	44.4
Rated input frequency		50/60 Hz \pm 5%										
Drive output	Applicable motor [kW]	0.75	1.1	1.5	2.2	3.0	3.7	5.5	7.5	11	15	18.5
	Output current [A] ^{*2}	2.1	3.1	3.8	5.1	7.2	9.0	13.0	17.0	25.0	32.0	37.0
	Default carrier frequency [kHz]	6	6	6	6	6	6	6	6	6	6	6
	Overload capacity	110% for 60 s										
	Max. output voltage	Three phase 380 to 480 Vac (proportional to input voltage)										
Max. output frequency		599 Hz										
Braking resistor	Recommended power [kW]	0.08	0.14	0.22	0.3	0.44	0.6	0.74	1.1	1.5	2.2	3
	Minimum resistance [Ω]	96	96	96	96	64	64	32	32	32	24	24
Braking unit		Built-in										
Enclosure		IP 20										

*1 0.75/1.5/2.2 kW are the preferred stocking ratings. To learn more, please get in touch with your local Inovance representative.



*2 Rated output current at default carrier frequency.

General specifications

Heavy duty ratings, 150% overload

Voltage class  		Three phase 380 to 480 Vac										
Drive model: MD520-4Txxx(B)(S)(-T)-INT ^{*3}		18.5 (B)(S)(-T)	22 (B)(S)(-T)	30(B)(S)	37(B)(S)	45(B)(S)	55(B)(S)	75(B)(S)	90(S)	110(S)	132(S)	160(S)
Frame size		T5		T6		T7		T8		T9		
Drive input	Rated input voltage	Three phase 380 to 480 Vac -15% to +10%										
	Rated input current [A]	43.4	51.3	57	69	89	106	139	164	196	240	287
	Power capacity [kVA]	45	54	52	63	81	97	127	150	179	220	263
Drive output	Rated input frequency	50/60 Hz ±5%										
	Applicable motor [kW]	18.5	22	30	37	45	55	75	90	110	132	160
	Output current [A] ^{*2}	37	45	60	75	91	112	150	176	210	253	304
	Default carrier frequency [kHz]	6	6	6	5	5	4	3	3	3	3	3
	Overload capacity	150% for 60 s										
	Max. output voltage	Three phase 380 to 480 Vac (proportional to input voltage)										
Braking resistor	Max. output frequency	599 Hz										
	Recommended power [kW]	4.5	4.5	6	7	9	11	15	18	22	26	32
Braking resistor	Minimum resistance [Ω]	24	24	19.2	14.8	12.8	9.6	6.8	11.4x2 ^{*4}	7.7x2 ^{*4}	7.7x2 ^{*4}	2.8x2 ^{*4}
	Braking unit	Built-in						MDBUN-60-5T x2	MDBUN-90-5T x2		MDBUN-200-5T x2	
Enclosure		IP 20										

Normal duty ratings, 110% overload

Voltage class  		Three phase 380 to 480 Vac										
Drive model: MD520-4Txxx(B)(S)(-T) ^{*3}		18.5 (B)(S)(-T)	22 (B)(S)(-T)	30(B)(S)	37(B)(S)	45(B)(S)	55(B)(S)	75(B)(S)	90(S)	110(S)	132(S)	160(S)
Frame size		T5		T6		T7		T8		T9		
Drive input	Rated input voltage	Three phase 380 to 480 Vac -15% to +10%										
	Rated input current [A]	51.3	65.8	71	86	111	143	167	198	239	295	359
	Power capacity [kVA]	54	60	65	79	102	131	153	181	219	270	328
Drive output	Rated input frequency	50/60 Hz ±5%										
	Applicable motor [kW]	22	30	37	45	55	75	90	110	132	160	200
	Output current [A] ^{*2}	45	60	75	91	112	150	176	210	253	304	377
	Default carrier frequency [kHz]	6	6	6	5	5	4	3	3	3	3	3
	Overload capacity	110% for 60 s										
	Max. output voltage	Three phase 380 to 480 Vac (proportional to input voltage)										
Braking resistor	Max. output frequency	599 Hz										
	Recommended power [kW]	4.5	4.5	6	7	9	11	15	18	22	26	32
Braking resistor	Minimum resistance [Ω]	24	24	19.2	14.8	12.8	9.6	6.8	11.4x2 ^{*4}	7.7x2 ^{*4}	7.7x2 ^{*4}	2.8x2 ^{*4}
	Braking unit	Built-in						MDBUN-60-5T x2	MDBUN-90-5T x2		MDBUN-200-5T x2	
Enclosure		IP 20										

*2 Rated output current at default carrier frequency.

*3 -T in the type code of 18.5B and 22B models indicates built-in DC reactor

*4 Minimum value of the resistance for each braking unit.

General specifications

Heavy duty ratings, 150% overload

Voltage class $\text{CE} \text{ (UL)}$		Three phase 380 to 480 Vac						
Drive model: MD520-4Txxx(S)-INT*5		200(S)	220(S)	250(S)	280(S)	315(S)	355(S)	400(S)
Frame size		T10		T11		T12		
Drive input	Rated input voltage	Three phase 380 to 480 Vac -15% to +10%						
	Rated input current [A]	365	410	441	495	565	617	687
	Power capacity [kVA]	334	375	404	453	517	565	629
	Rated input frequency	50/60 Hz $\pm 5\%$						
Drive output	Applicable motor [kW]	200	220	250	280	315	355	400
	Output current [A]*2	377	426	465	520	585	650	725
	Default carrier frequency [kHz]	3	3	3	3	3	3	3
	Overload capacity	150% for 60 s						
	Max. output voltage	Three phase 380 to 480 Vac (proportional to input voltage)						
	Max. output frequency	599 Hz						
Braking resistor	Recommended power [kW]	42	54	60	69	78	87	87
	Minimum resistance [Ω]	2.8×2^4	2.8×2^4	2.8×3^4	2.8×3^4	2.8×3^4	2.8×3^4	2.8×3^4
Braking unit		MDBUN-200-5T x2		MDBUN-200-5T x3				
Enclosure		IP 00						

Normal duty ratings, 110% overload

Voltage class $\text{CE} \text{ (UL)}$		Three phase 380 to 480 Vac						
Drive model: MD520-4Txxx(S)-INT*5		200(S)	220(S)	250(S)	280(S)	315(S)	355(S)	400(S)
Frame size		T10		T11		T12		
Drive input	Rated input voltage	Three phase 380 to 480 Vac -15% to +10%						
	Rated input current [A]	456	507	559	624	708	782	840
	Power capacity [kVA]	417	464	511	571	647	715	768
	Rated input frequency	50/60 Hz $\pm 5\%$						
Drive output	Applicable motor [kW]	250	280	315	355	400	450	500
	Output current [A]*2	465	520	585	650	725	820	880
	Default carrier frequency [kHz]	3	3	3	3	3	3	3
	Overload capacity	110% for 60 s						
	Max. output voltage	Three phase 380 to 480 Vac (proportional to input voltage)						
	Max. output frequency	599 Hz						
Braking resistor	Recommended power [kW]	42	54	60	69	78	87	87
	Minimum resistance [Ω]	2.8×2^4	2.8×2^4	2.8×3^4	2.8×3^4	2.8×3^4	2.8×3^4	2.8×3^4
Braking unit		MDBUN-200-5T x2		MDBUN-200-5T x3				
Enclosure		IP 00						


*2 Rated output current at default carrier frequency.

*4 Minimum value of the resistance for each braking unit.


*5 For the standard AC drive, we recommend motor cable lengths to be <100 m. Where your installation exceeds 100 m, the "L" version is an option with a built-in AC output reactor (1% voltage drop) which can help to overcome the effects of long cable installations. To discuss your application, contact your local Inovance representative.

General specifications

Heavy duty ratings, 150% overload

Voltage class 		Three phase 200 - 240 Vac															
Drive model: MD520-2Txxx(B)(S)-INT		0.4 B(S)	0.7 B(S)	1.1 B(S)	1.5 B(S)	2.2 B(S)	3.7 B(S)	5.5 B(S)	7.5 B(S)	11 B(S)	15 B(S)	18.5 B(S)	22 B(S)	30 B(S)	37 B(S)	45(S)	55(S)
Frame size		T1				T2		T3	T4	T5	T6		T7		T8		
Drive input	Rated input voltage	Three phase 200 to 240 Vac -15% to +10%															
	Rated input current [A]	2.4	4.6	6.3	9.0	11.4	16.7	32.2	41.3	51.3	57	69	89	106	139	164	196
	Power capacity [kVA]	1.1	2.1	2.9	4.1	5.2	7.6	14.7	18.9	27	26.1	31.6	40.7	48.5	63.6	75	89.6
	Rated input frequency	50/60 Hz ±5%															
Drive output	Applicable motor [kW]	0.4	0.75	1.1	1.5	2.2	3.7	5.5	7.5	11	15	18.5	22	30	37	45	55
	Output current [A] ^{*2}	2.1	3.8	5.1	7.2	9.0	13	25	32	45	60	75	91	112	150	176	210
	Default carrier frequency [kHz]	6	6	6	6	6	6	6	6	6	6	5	5	4	3	3	3
	Overload capacity	150% for 60 s															
	Max. output voltage	Three phase 200 to 240 Vac (proportional to input voltage)															
	Max. output frequency	599 Hz															
Braking resistor	Recommended power [kW]	0.09	0.16	0.25	0.34	0.5	0.8	1.3	1.7	2.3	3.0	3.9	4.6	5.5	6.8	5.0 x2	6.0 x2
	Minimum resistance [Ω]	48	48	32	32	16	16	12	12	12	9	7	6	5	4	5.5 x2 ^{*4}	3.7 x2 ^{*4}
Braking unit		Built-in														MDBUN-60-2T x2	MDBUN-90-2T x2
Enclosure		IP 20															

Normal duty ratings, 110% overload


Voltage class 		Three phase 200 - 240 Vac															
Drive model: MD520-2Txxx(B)(S)-INT		0.4 B(S)	0.7 B(S)	1.1 B(S)	1.5 B(S)	2.2 B(S)	3.7 B(S)	5.5 B(S)	7.5 B(S)	11 B(S)	15 B(S)	18.5 B(S)	22 B(S)	30 B(S)	37 B(S)	45(S)	55(S)
Frame size		T1				T2		T3	T4	T5	T6		T7		T8		
Drive input	Rated input voltage	Three phase 200 to 240 Vac -15% to +10%															
	Rated input current [A]	3.7	6.4	9.1	11.3	15.9	22.4	39.7	44	65.8	71	86	111	143	167	198	239
	Power capacity [kVA]	1.7	2.9	4.2	5.2	7.3	10.2	18.2	20.1	30.1	32.5	39.3	50.8	65.4	76.4	90.5	109.3
	Rated input frequency	50/60 Hz ±5%															
Drive output	Applicable motor [kW]	0.75	1.1	1.5	2.2	3.7	5.5	7.5	11	15	18.5	22	30	37	45	55	75
	Output current [A] ^{*2}	3.1	5.1	7.2	9.0	13	17	32	37	60	75	91	112	150	176	210	253
	Default carrier frequency [kHz]	6	6	6	6	6	6	6	6	6	6	5	5	4	3	3	3
	Overload capacity	110% for 60 s															
	Max. output voltage	Three phase 200 to 240 Vac (proportional to input voltage)															
	Max. output frequency	599 Hz															
Braking resistor	Recommended power [kW]	0.09	0.16	0.25	0.34	0.5	0.8	1.3	1.7	2.3	3.0	3.9	4.6	5.5	6.8	5.0 x2	6.0 x2
	Minimum resistance [Ω]	48	48	32	32	16	16	12	12	12	9	7	6	5	4	5.5 x2 ^{*4}	3.7 x2 ^{*4}
Braking unit		Built-in														MDBUN-60-2T x2	MDBUN-90-2T x2
Enclosure		IP 20															

*2 Rated output current at default carrier frequency.

*4 Minimum value of the resistance for each braking unit.

General specifications

Heavy duty ratings , 150% overload

Voltage class 		One phase 200 - 240 Vac			
Drive model: MD520-2SxxxB(S)-INT		0.4B(S)	0.7B(S)	1.5B(S)	2.2B(S)
Frame size		T2			
Drive input	Rated input voltage	One phase 200 to 240 Vac -15% to +10%			
	Rated input current [A]	5.4	8.2	14	20
	Power capacity [kVA]	1.4	2.2	3.7	6
	Rated input frequency	50/60 Hz \pm 5%			
Drive output	Applicable motor [kW]	0.4	0.75	1.5	2.2
	Output current [A] ^{*2}	2.3	4.0	7.0	9.6
	Default carrier frequency [kHz]	6	6	6	6
	Overload capacity	150% for 60 s			
	Max. output voltage	Three phase 200 to 240 Vac (proportional to input voltage)			
Braking resistor	Max. output frequency	599 Hz			
	Recommended power [kW]	0.08	0.08	0.1	0.1
Braking resistor	Minimum resistance [Ω]	64	64	32	32
	Braking unit	Built-in			
Enclosure		IP 20			

*2 Rated output current at default carrier frequency.

Product ordering code

MD520 - 4T 220 B S -L -INT

①
②
③
④
⑤
⑥
⑦

① **Drive series:**

MD520 series

② **Voltage level:**

4T: three phase 380 V - 480 V
2T: three phase 200 V - 240 V
2S: single phase 200 V - 240 V

③ **Power rating for heavy duty (kW):**

0.4: 0.4
400: 400

④ **Braking unit:**

None: without braking unit
B: with braking unit

⑤ **STO:**

None: STO not supported
S: STO supported

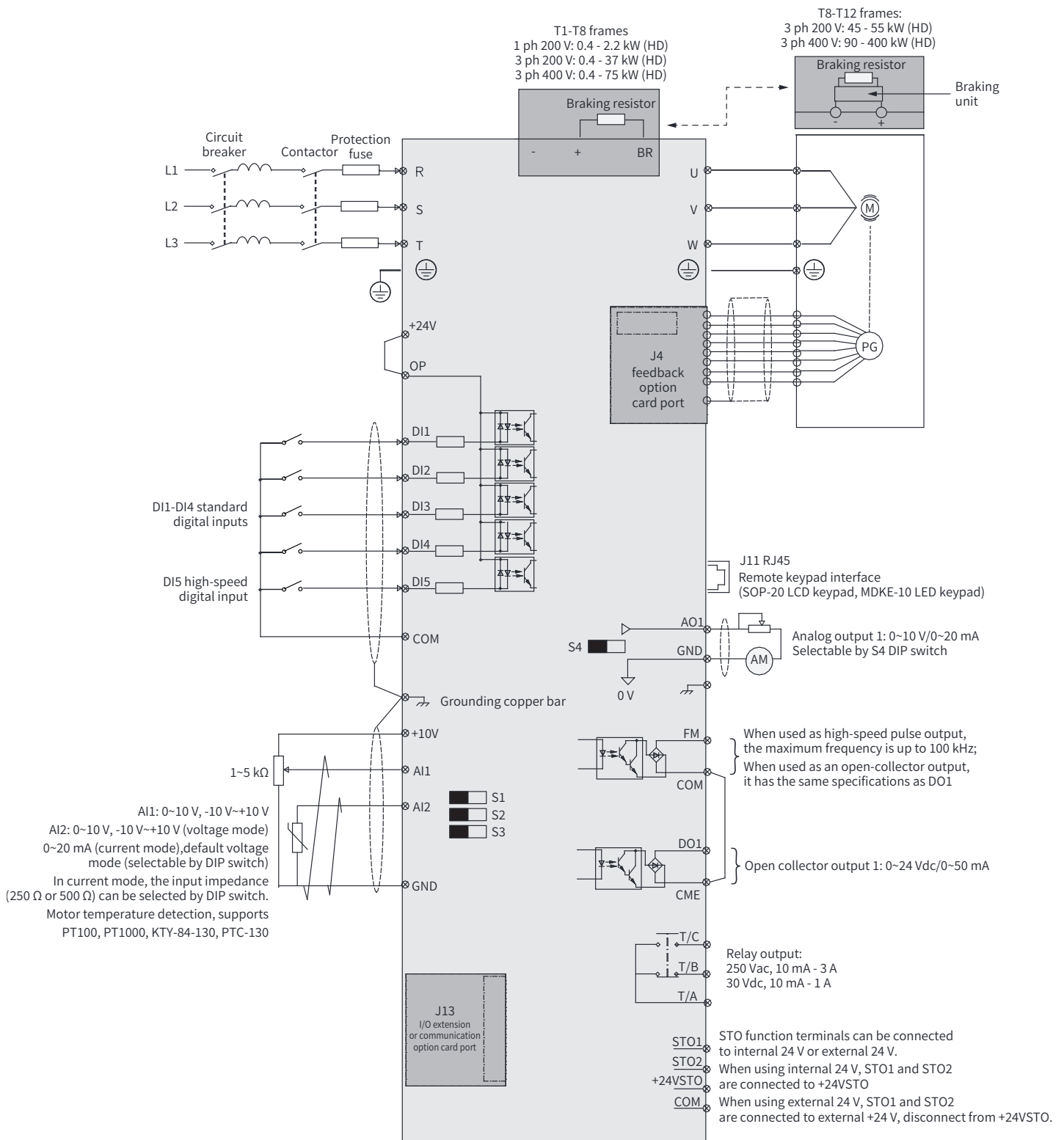
⑥ **Reactor:**

None: without reactor
-T: with DC reactor; applicable to T5 models
-L: with AC output reactor; applicable to T10 to T12 models

⑦ **Version:**

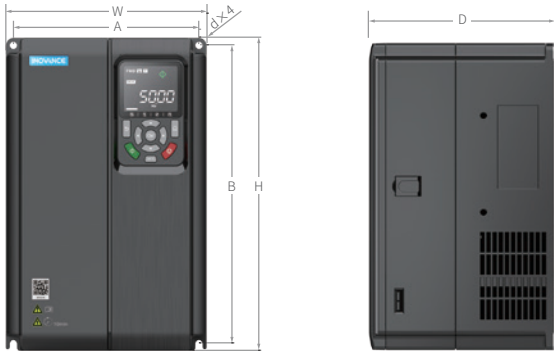
INT: International variant

General wiring diagram

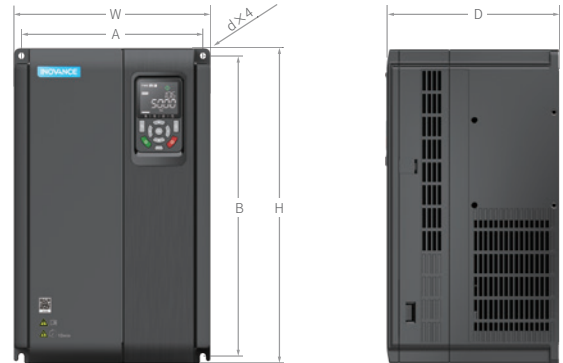


Dimensions

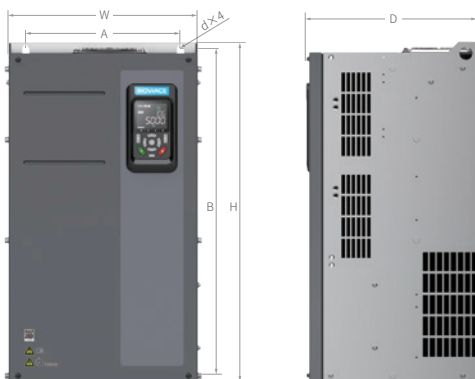
MD520-4T0.4B(S)-INT to MD520-4T15B(S)-INT
 MD520-2T0.4B(S)-INT to MD520-2T7.5B(S)-INT
 MD520-2S0.4B(S)-INT to MD520-2S2.2B(S)-INT



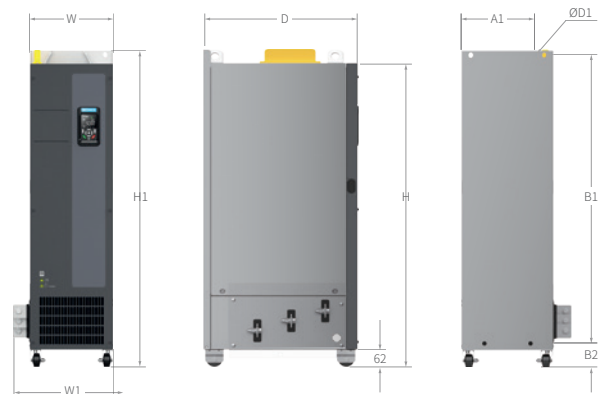
MD520-4T18.5B(S)-INT to MD520-4T37B(S)-INT
 MD520-2T11B(S)-INT to MD520-2T18.5B(S)-INT



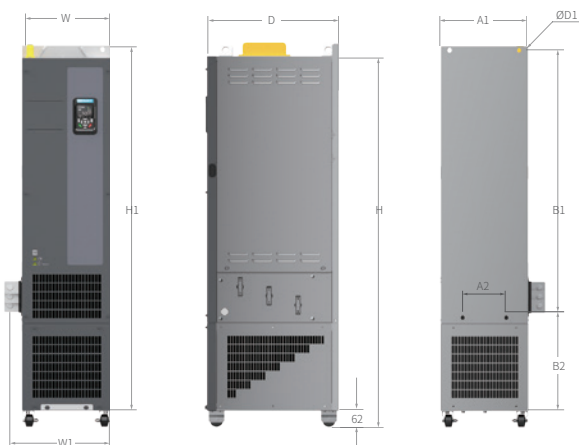
MD520-4T45B(S)-INT to MD520-4T160(S)-INT
 MD520-2T22B(S)-INT to MD520-2T55(S)-INT



MD520-4T200(S)-INT to MD520-4T400(S)-INT



MD520-4T200(S)-L-INT to MD520-4T400(S)-L-INT



MD520 Model	Frame size	Dimensions (mm)										Mass (kg)
		A	A1	B	B1	H	H1	W	W1	D	D1	
MD520-4T0.4B(S)-INT, MD520-4T0.7B(S)-INT, MD520-4T1.1B(S)-INT MD520-4T1.5B(S)-INT, MD520-4T2.2B(S)-INT, MD520-4T3.0B(S)-INT, MD520-2T0.4B(S)-INT, MD520-2T0.7B(S)-INT MD520-2T1.1B(S)-INT, MD520-2T1.5B(S)-INT MD520-4T3.7B(S)-INT, MD520-4T5.5B(S)-INT	T1	119	/	189	/	200	/	130	/	152	Ø5	1.6
MD520-2S0.4B(S)-INT to MD520-2S2.2B(S)-INT MD520-2T2.2B(S)-INT, MD520-2T3.7B(S)-INT	T2	119	/	189	/	200	/	130	/	162	Ø5	2.0
MD520-4T7.5B(S)-INT, MD520-4T11B(S)-INT, MD520-2T5.5B(S)-INT	T3	128	/	238	/	250	/	140	/	170	Ø6	3.3
MD520-4T15B(S)-INT, MD520-2T7.5B(S)-INT	T4	166	/	266	/	280	/	180	/	170	Ø6	4.3
MD520-4T18.5B(S)-INT, MD520-4T22B(S)-INT, MD520-2T11B(S)-INT	T5	195	/	335	/	350	/	210	/	192	Ø6	10
MD520-4T30B(S)-INT, MD520-4T37B(S)-INT MD520-2T15B(S)-INT, MD520-2T18.5B(S)-INT	T6	230	/	380	/	400	/	250	/	220	Ø7	17.5
MD520-4T45B(S)-INT, MD520-4T55B(S)-INT MD520-2T22B(S)-INT, MD520-2T30B(S)-INT	T7	245	/	523	/	542	/	300	/	275	Ø10	35
MD520-4T75B(S)-INT, MD520-4T90(S)-INT, MD520-4T110(S)-INT MD520-2T37B(S)-INT, MD520-2T45(S)-INT, MD520-2T55(S)-INT MD520-4T132(S)-INT, MD520-4T160(S)-INT	T8	270	/	560	/	580	/	338	/	315	Ø10	51.5
MD520-4T200(S)-INT	T9	320	/	890	/	915	/	400	/	320	Ø10	85
MD520-4T220(S)-INT MD520-4T200(S)-L-INT MD520-4T220(S)-L-INT	T10	240 240	150 150	1,035 1,035	86 424	1,086 1,424	1,134 1,472	300 300	360 360	500 500	Ø13 Ø13	110 160
MD520-4T250(S)-INT, MD520-4T280(S)-INT MD520-4T250(S)-L-INT MD520-4T280(S)-L-INT	T11	225 225	185 185	1,175 1,175	97 435	1,248 1,586	1,284 1,622	330 330	390 390	545 545	Ø13 Ø13	155 215
MD520-4T315(S)-INT, MD520-4T355(S)-INT, MD520-4T400(S)-INT MD520-4T315(S)-L-INT, MD520-4T355(S)-L-INT MD520-4T400(S)-L-INT	T12	240 240	200 200	1,280 1,280	101 432	1,355 1,683	1,405 1,733	340 340	400 400	545 545	Ø16 Ø16	185 245

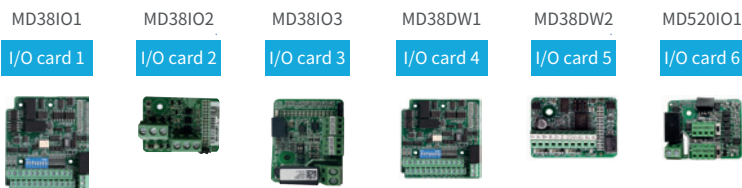
Option cards and mounting position

Feedback option cards



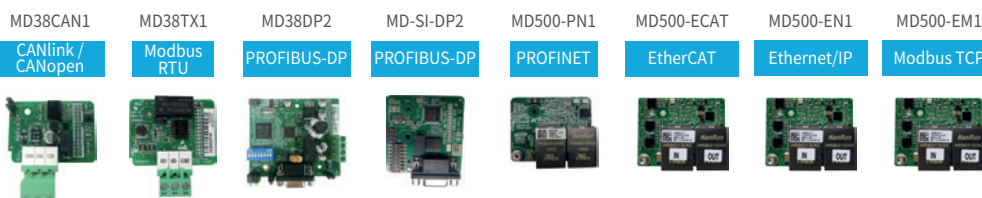
MD38PGMD TTL differential or HTL (A/B/Z) encoder
MD38PG4D Resolver
MD38PG4 Resolver
ES510-PG-CT1 Serial encoder
MD520-PG-S1 Sin/Cos encoder

I/O extension option cards



MD38I01 I/O card 1
MD38I02 I/O card 2
MD38I03 I/O card 3
MD38DW1 I/O card 4
MD38DW2 I/O card 5
MD520I01 I/O card 6

Communication option cards



MD38CAN1 CANlink / CANopen
MD38TX1 Modbus RTU
MD38DP2 PROFIBUS-DP
MD-SI-DP2 PROFIBUS-DP
MD500-PN1 PROFINET
MD500-ECAT EtherCAT
MD500-EN1 Ethernet/IP
MD500-EM1 Modbus TCP



MDKE-10 SOP-20



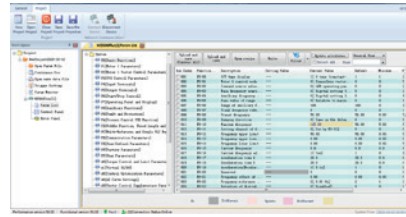
Feedback card slot

Extension or comms card slot

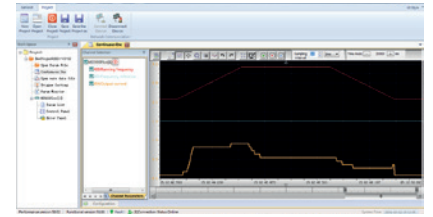
PC software tools

InoDriverShop

InoDriverShop은 Inovance의 PC 기반 소프트웨어를 무료로 제공합니다. 친숙한 Windows 인터페이스를 기반으로 이루어져 있습니다. InoDriverShop은 드라이브 매개 변수를 업로드하고 다운로드 할 수 있으며, 실시간 오실로스코프와 같은 다양한 기능들이 있습니다. PC와의 연결에는 표준 USB-RS485 어댑터를 사용할 수 있습니다. MDKE-10 또는 SOP-20 키패드도 소프트웨어에 연결하여 사용할 수 있습니다.



Parameter uploading/downloading



Multi channel oscilloscope

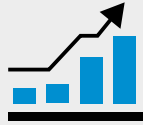
Accessories list

Category	Model	Function description	Suitable for
External braking units	MDBUN-60-5T	External braking unit, rated current 60 A, for supply input voltage 380 to 480 Vac AC drives.	4T models: 90G
	MDBUN-90-5T	External braking unit, rated current 90 A, for supply input voltage 380 to 480 Vac AC drives.	4T models: 110G - 132G
	MDBUN-200-5T	External braking unit, rated current 200 A, for supply input voltage 380 to 480 Vac AC drives.	4T models: 160G - 450G
	MDBUN-60-2T	External braking unit, rated current 60 A, for supply input voltage 200 to 240 Vac AC drives.	2T models: 45G
	MDBUN-90-2T	External braking unit, rated current 90 A, for supply input voltage 200 to 240 VAC AC drives.	2T models: 55G
Keypads	MDKE-10	Remote LED keypad. Can be used as USB to RS485 adapter for the connection to the PC. Includes MDCAB cable.	All
	SOP-20	Remote multi-language LCD keypad. For parameter programming and monitoring, data copy. Keypad can be used as USB to RS485 adapter for the connection to the PC. Includes MDCAB cable.	All
	MDCAB	3 meter connection cable for remote keypad.	All
	MDCAB-1.5	1.5 meter connection cable for remote keypad.	All
	CP600-BASE1	Panel mounting base (only) for SOP-20 keypad. IP20 rating.	All
	SOP20-MP-IP20	Panel mounting base for SOP-20 keypad, including adapting metal plate and PCB protection plate. IP20 rating.	All
	SOP20-MP-IP54	Panel mounting base for SOP-20 keypad, including PCB protection plate and rubber seals. IP54 rating.	All
I/O extension cards	MD580-AZJ1	Panel mounting base for MDKE-10. IP20 rating.	All
	MD38IO1	I/O extension card 1, provides: 5x DI, 1x AI, 1x relay output, 1x DO, 1x AO, RS485 (Modbus-RTU) and CAN (CANlink) ports.	Frame sizes T4-T12
	MD38IO2	I/O extension card 2, provides 3x extra DI terminals.	All
	MD38IO3	I/O extension card 3, provides 3x DI, 1x relay output, Modbus-RTU interface.	All
	MD38DW1	I/O extension card 4, provides 5x DI, 1x AI, 1x AO, 1x DO, 1x relay output, RS485 (Modbus-RTU) and CAN (CANlink) ports, TTL differential encoder input.	Frame sizes T4-T12
	MD38DW2	I/O extension card 5, provides RS485 (Modbus-RTU) port and TTL differential encoder input.	All
Fieldbus cards	MD520IO1	I/O extension card 6, provides 3x DI, 1x relay output, 1x AO, Modbus-RTU interface.	All
	MD38CAN1	CANlink/CANopen option card.	All
	MD38TX1	Modbus RTU option card.	All
	MD38DP2	PROFIBUS DP option card.	Frame sizes T4-T12
	MD-SI-DP2	PROFIBUS DP option card (designed to cover small frames).	All
	MD500-PN1	PROFINET option card.	All
	MD500-ECAT	EtherCAT option card.	All
PG cards	MD500-EN1	Ethernet/IP option card.	All
	MD500-EM1	Modbus TCP option card.	All
	MD38PGMD	Multifunctional encoder option card, compatible with differential, open-collector and push-pull encoder types. Supports differential output and open-collector output.	All
	MD38PG4D	Option card for resolver (10 kHz excitation) with selectable ratio simulated encoder output (TTL differential).	Frame sizes T4, T7-T12
	MD38PG4	Option card for resolver (10 kHz excitation).	All
Mounting brackets	ES510-PG-CT1	23-bit serial encoder card.	All
	MD520-PG-S1	Sin/Cos encoder option card with selectable ratio simulated encoder output (TTL differential and HTL).	All
	MD500-AZJ-A1T1	Through hole mounting bracket for frame T1.	Frame size T1
	MD500-AZJ-A1T2	Through hole mounting bracket for frame T2.	Frame size T2
	MD500-AZJ-A1T3	Through hole mounting bracket for frame T3.	Frame size T3
	MD500-AZJ-A1T4	Through hole mounting bracket for frame T4.	Frame size T4
	MD500-AZJ-A1T5	Through hole mounting bracket for frame T5.	Frame size T5
	MD500-AZJ-A1T6	Through hole mounting bracket for frame T6.	Frame size T6
	MD500-AZJ-A1T7	Through hole mounting bracket for frame T7.	Frame size T7
	MD500-AZJ-A1T8	Through hole mounting bracket for frame T8.	Frame size T8
Cable brackets	MD500-AZJ-A1T9	Through hole mounting bracket for frame T9.	Frame size T9
	MD500-AZJ-A2T1	Cable shield grounding bracket for frame T1.	Frame size T1
	MD500-AZJ-A2T2	Cable shield grounding bracket for frame T2.	Frame size T2
	MD500-AZJ-A2T3	Cable shield grounding bracket for frame T3.	Frame size T3
	MD500-AZJ-A2T4	Cable shield grounding bracket for frame T4.	Frame size T4
	MD500-AZJ-A2T5	Cable shield grounding bracket for frame T5.	Frame size T5
	MD500-AZJ-A2T6	Cable shield grounding bracket for frame T6.	Frame size T6
	MD500-AZJ-A2T7	Cable shield grounding bracket for frame T7.	Frame size T7
	MD500-AZJ-A2T8	Cable shield grounding bracket for frame T8.	Frame size T8
Guide rails	MD500-AZJ-A2T9	Cable shield grounding bracket for frame T9.	Frame size T9
	MD500-AZJ-A3T10	Guide rails for inserting in/extracting from the cabinet for frame sizes T10 to T12.	Frame sizes T10-T12

INOVANCE



2003
founded



IPO:2010
Shenzhen, China



20k
20,256
employees



\$3,405 million
revenues in 2022



No.5
for servo drives
globally in 2022*



No.8
for LV AC drives
globally in 2022*



3.36 million
servo drives and
motors shipped in 2022



2,248,000
EV powertrains
shipped in 2022



17,000+
industrial robots
delivered by end of 2022



13,598
MV drives delivered
by end of 2022



4.3 million
AC drives
shipped in 2022



100+
Inovance's products are in
use in 100+ countries

*According to leading market research company Interact Analysis

For more information, please contact our local offices.

이노밴스 테크놀로지 코리아 주식회사
Inovance Technology Korea Co.,Ltd.

www.inovance.co.kr

서울특별시 영등포구 선유로130 에이스하이테크 3차 1003호

고객 센터 : 02-3489-8850

이메일 : INOVANCEKR@inovance.eu



Kakao Channel



Linked page



Website